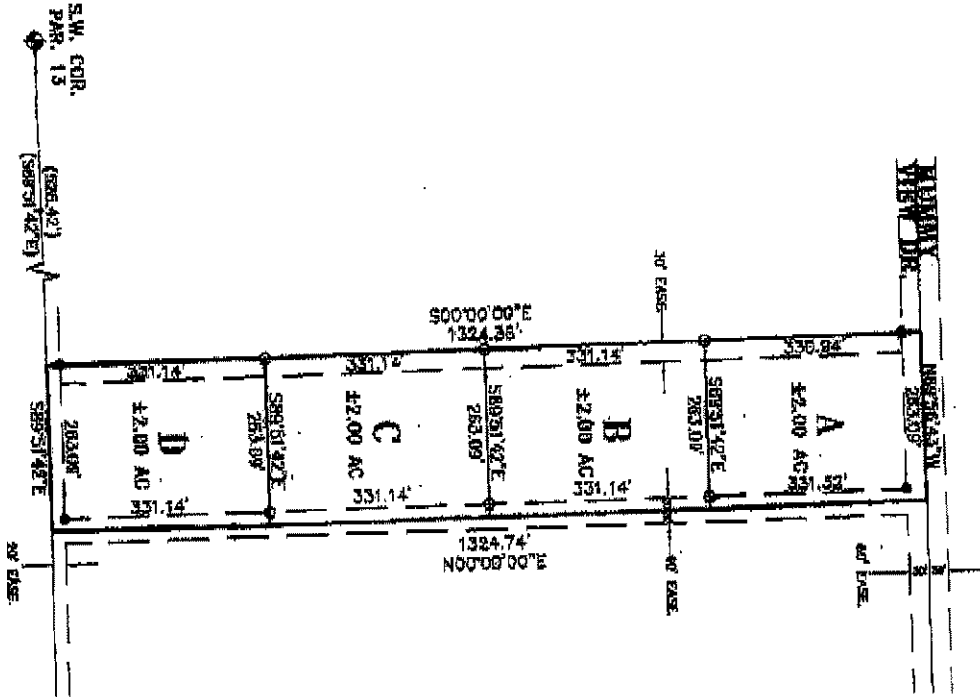


THIS PLAN AND THE SURVEY ON WHICH IT IS
 BASED ARE HEREBY OFFERED FOR RECORD
 TO THE PUBLIC BY THE SURVEYOR AND THE
 SURVEYOR'S OFFICE. THE SURVEYOR'S
 OFFICE IS NOT RESPONSIBLE FOR THE
 ACCURACY OF THE INFORMATION CONTAINED
 HEREIN.



RECORD OF SURVEY
 SPLIT A 10.00 ACRE PORTION OF
PARCEL 13, PRESCOTT PRAIRIE
 (BOOK 122 L.S., PAGE 53 Y.C.R.G.)
 A PORTION OF
 SECTION 5, T15N, R1E
 YAVAPAI COUNTY, ARIZONA

- LEGEND**
- = FOUND 1/2" PINS OR AS NOTED
 - = SET 1/2" IRON STUDS CAP
 - = APPROX SPODE T&S TRAILS
 - () = RECORDS INFORMATION
- NOTE: ALL DIMENSIONS OF RECORD MAY NOT BE SHOWN ON THIS PLAN.



THE STATE OF ARIZONA
 DEPARTMENT OF LAND WATER AND AIR
 DIVISION OF LAND SURVEYING
 SURVEYOR FOR HARIDY

NO.	DATE	DESCRIPTION	BY
1	04-27-07	RECORD	D.A.H.
2	04-27-07	RECORD	D.A.H.
3	04-27-07	RECORD	D.A.H.
4	04-27-07	RECORD	D.A.H.